

**STUDY NO.: 02**

**NAME OF THE STUDY: STUDY ON THE EXTERNAL MORPHOLOGY OF  
GRAMINEAE/POACEAE FAMILY (A WHEAT PLANT)**

Bengali name: Gom

English name: Wheat

Scientific name: *Triticum aestivum*

Family: Gramineae (Poaceae)

**Habit:** An annual, cereal, cultivated herb.

**Root:** The roots are fibrous and adventitious root also develop from the basal node of the stem.

**Stem:** Stem erect, usually glabrous, culm (jointed stem) cylindrical with solid nodes & hollow internodes, internodes are covered by the leaf-sheaths, branching by tillering. (The top most internode bears inflorescence.)

**Leaf:** Simple, sessile, alternate, distichous. Leaf is divided into two parts:

i) leaf blade- long, narrow, lanceolate, acuminate with parallel venation.

ii) leaf sheath- encircles the stem.

At the junction of the leaf blade and leaf sheath there is a thin, membranous, colorless structure called ligule. Two hairy structures called auricles present at both ends of the junction.

**Inflorescence:** Spike of spikelets.

**Spikelet:** Sessile and arranged alternately, variable number of florets and boat shaped two empty glumes.

**Floret:** Lower florets fertile and terminal floret rudimentary or absent. Fertile floret consists of a lemma, a palea and a flower. Lemma is large boat shaped with awned apex. Palea is small, thin and membranous.

**Flower:** Sessile, incomplete, bracteate, two bracts – a lemma (inferior palea) and a palea (superior palea), opposite to each other, zygomorphic, bisexual, hypogynous and irregular. It includes perianth, androecium and gynoecium.

**Perianth:** The perianth is represented by two narrow, thin and transparent lodicules, lies beneath the ovary.

**Androecium:** Stamens-3, filament long, slender, free, anther bi-lobed and versatile.

**Gynoecium:** Monocarpellary, ovary obovate, hairy, superior, style reduced or short, stigma bifurcated and feathery, placentation basal.

**Fruits:** Caryopsis, seed coat firmly united to the ovary wall.

**Seed:** Albuminous.

**Floral formula:** Br. % ♀ P  $\overset{\uparrow}{2}$ (lodicules) A  $\overset{\uparrow}{3}$ G  $\overset{\uparrow}{1}$

**Family identifying characters:**

- Stem culm
- Inflorescence spikelet
- Anthers versatile
- Basal placentation
- Fruit caryopsis
- Stigma feathery

**Other species:**

- Rice : *Oryza sativa*-cereal edible
- Maize : *Zea mays*-cereal edible
- Barley : *Hordeum vulgare*-cereal edible
- Sugarcane : *Saccharum officinarum*
- Wheat : *Triticum aestivum*-cereal edible

**Book references:**

1. Botany for Degree Students, A. C. Datta
2. College Botany, H. C. Gangulee
3. Modern Practical Botany (Vol-II), B. P. Pandey

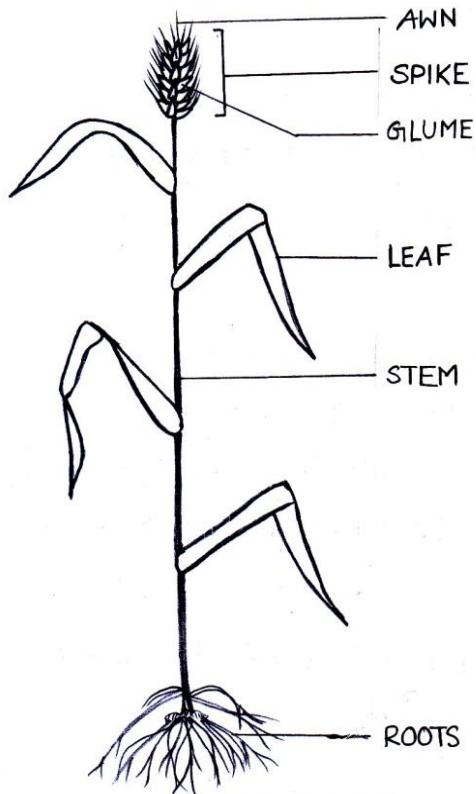


Fig: A WHEAT PLANT

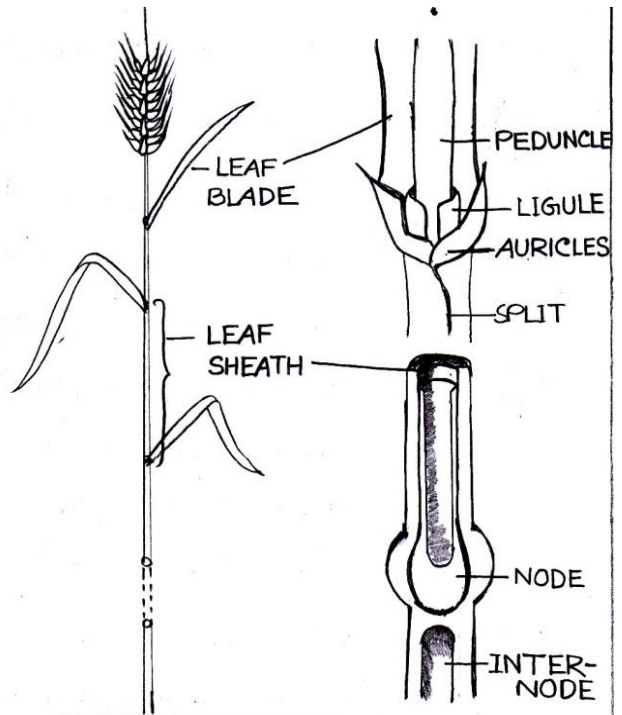


Fig: PARTS OF LEAF AND STEM OF A WHEAT PLANT.

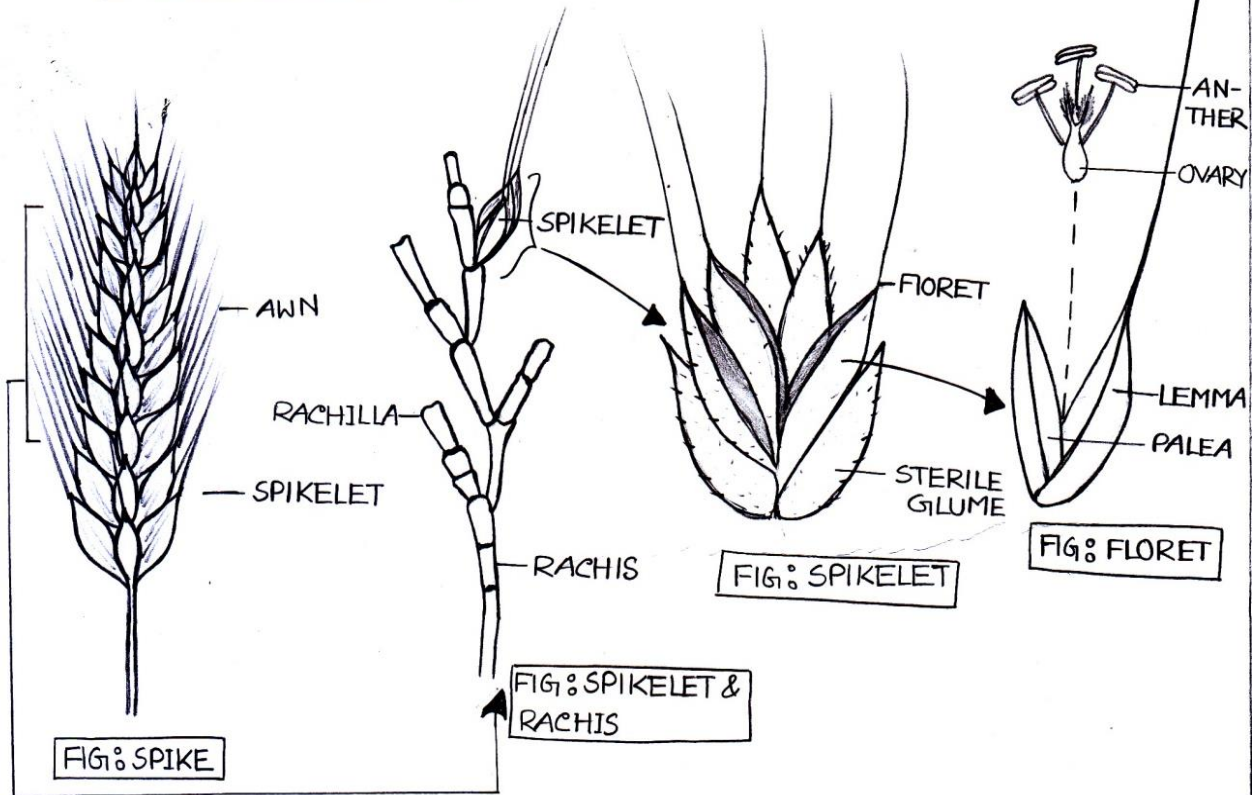


FIG: SPIKE

FIG: SPIKELET & RACHIS

FIG: SPIKELET

FIG: FLORET

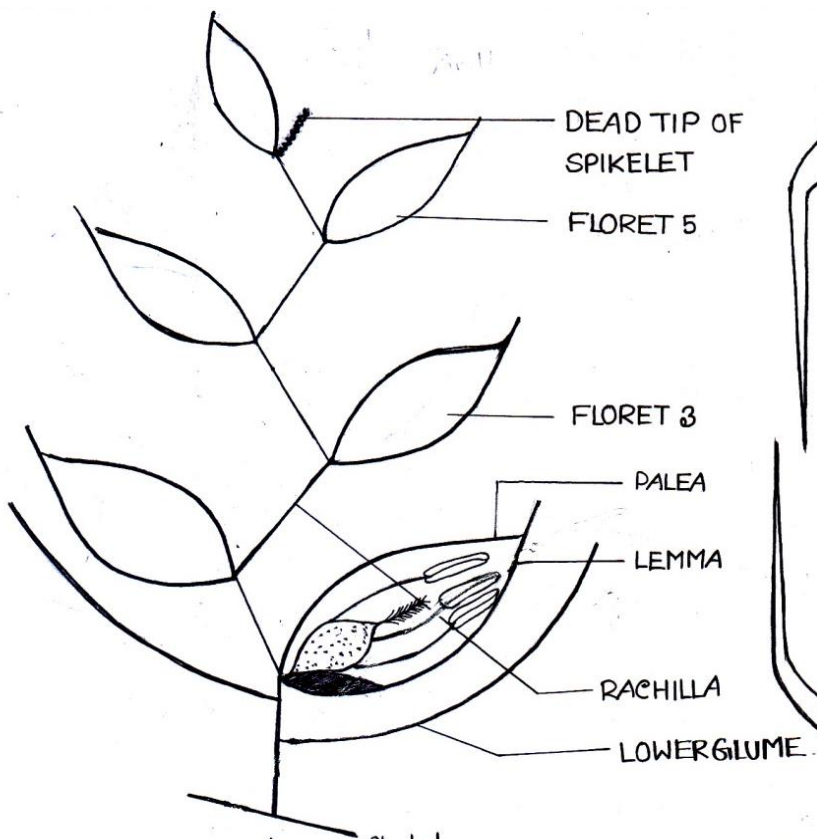


Fig: Diagram of a spikelet

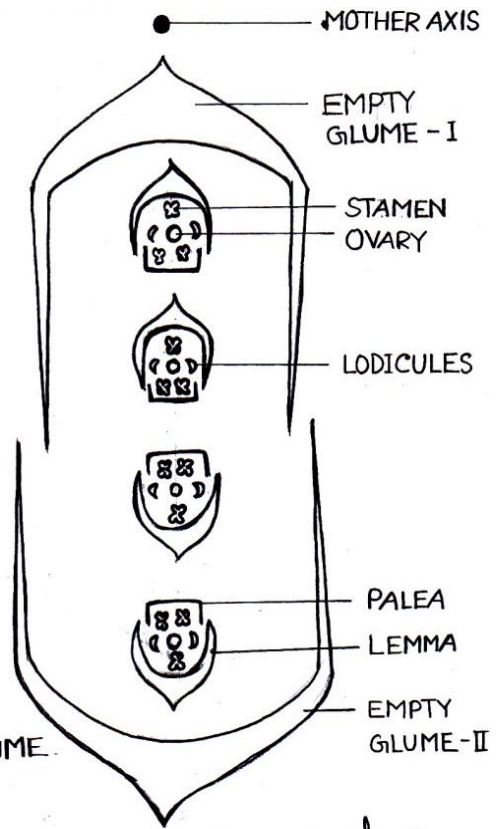


Fig: Floret diagram of a spikelet

♀  
 STIGMA }  
 STYLE } PISTAL  
 OVARY }

♂  
 ANTH (8)  
 FILAMENTS

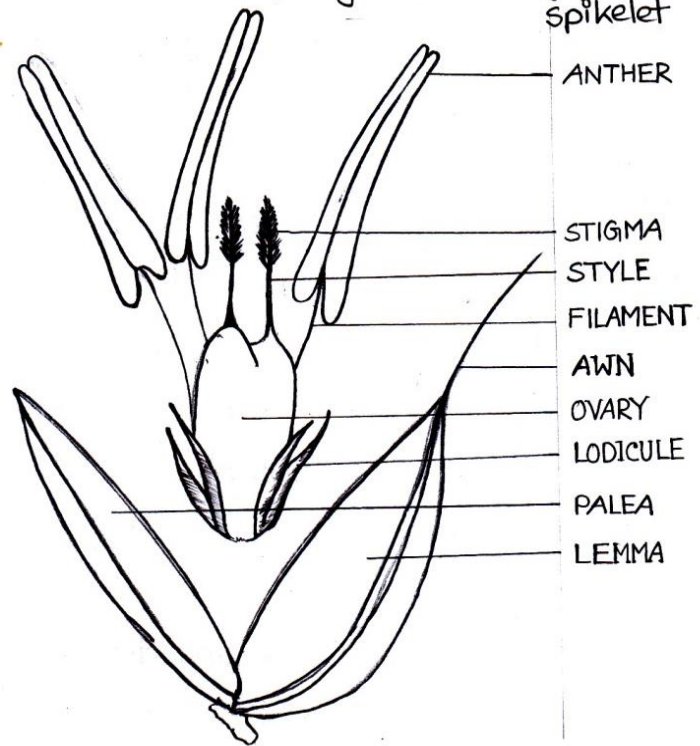


Fig: A wheat floret with its flower parts.