

Determination of Animal Live Weight

Objectives of live weight determination:

1. For ration calculation of animals.
2. To know when to breed.
3. It is useful for determination of marketing age of animals.
4. To measure the dosages of various medications and vaccines.

Live weight: Weight of whole body weight of a live animal.

Sometimes we have to determine the live weight of an animal , but it is not possible to determine actual weight without animal balance . There is a relationship between live wt. with its length & heart girth . Thinking this concept scientist suggests to determine approximate live weight of animal Using following formula .

Determination of live weight by Shaeffer's formula :

Shaeffer's formula is most useful for zebu cattle within 5% accuracy.

$$W = \frac{L \times G^2}{300} \text{ pounds or}$$

(Here, L= Length between Point of shoulder to Pin bone in inch &
G= Length of Heart Girth in inch)

$$W = \frac{L \times G^2}{10400} \text{ kg}$$

(Here, L= Length between Point of shoulder to Pin bone in cm &
G= Length of Heart Girth in cm)

During measuring, animal should be stand on a flat ground and its fore two legs and hind two legs must be on equal line in standing position.

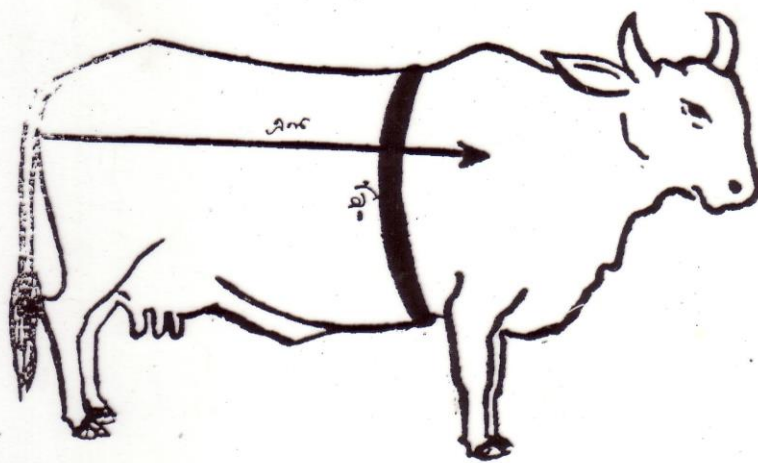


Fig: Live weight determination of cattle